

iC^oNNECT

7th March 2018



Derek O'Súilleabháin

Senior macOS, iOS & JAMF Administrator

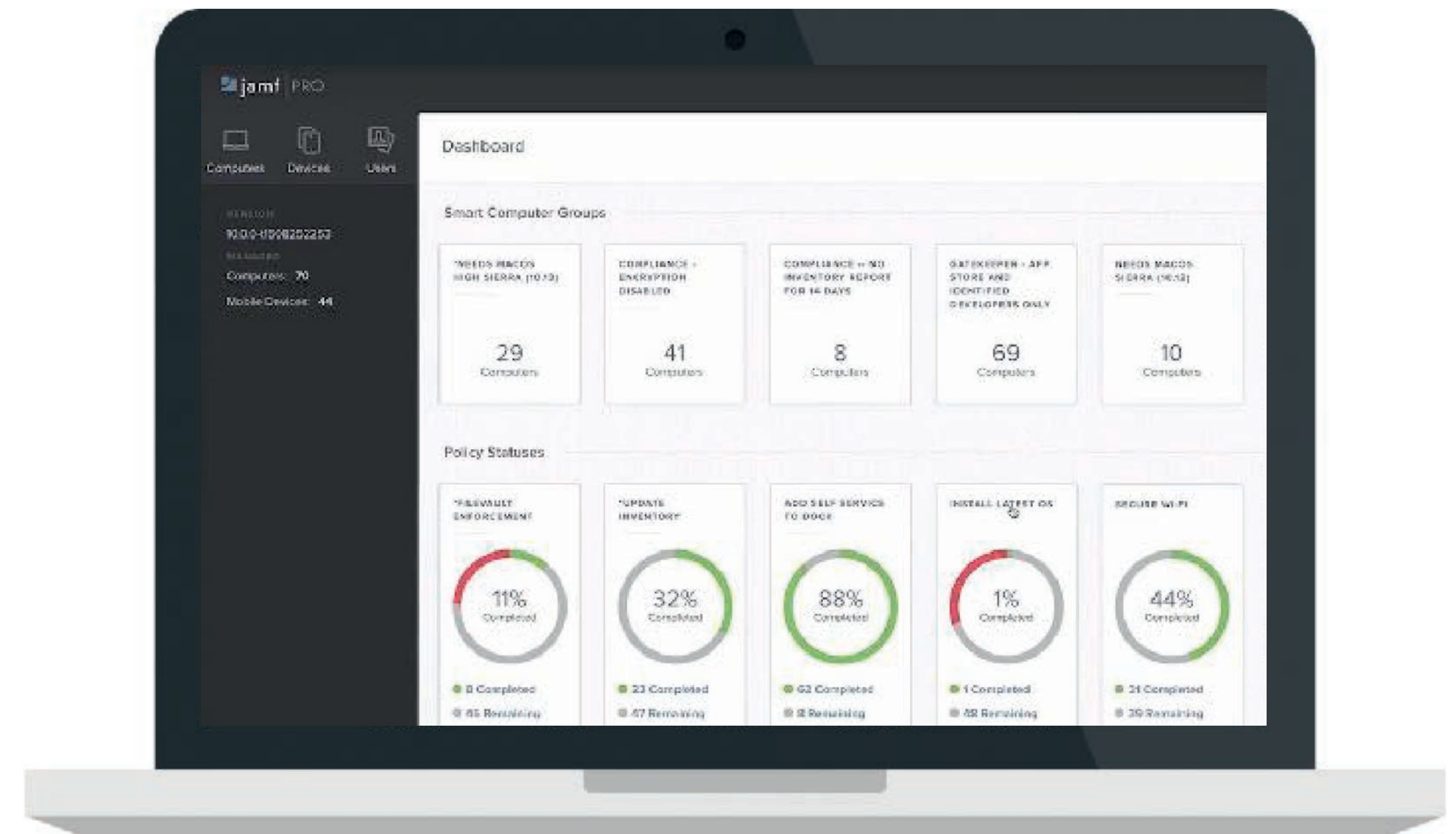
Elaine Mulchinock

Business Development Manager (Munster)

What is JAMF Pro & what does it do?

iC[®]NNECT

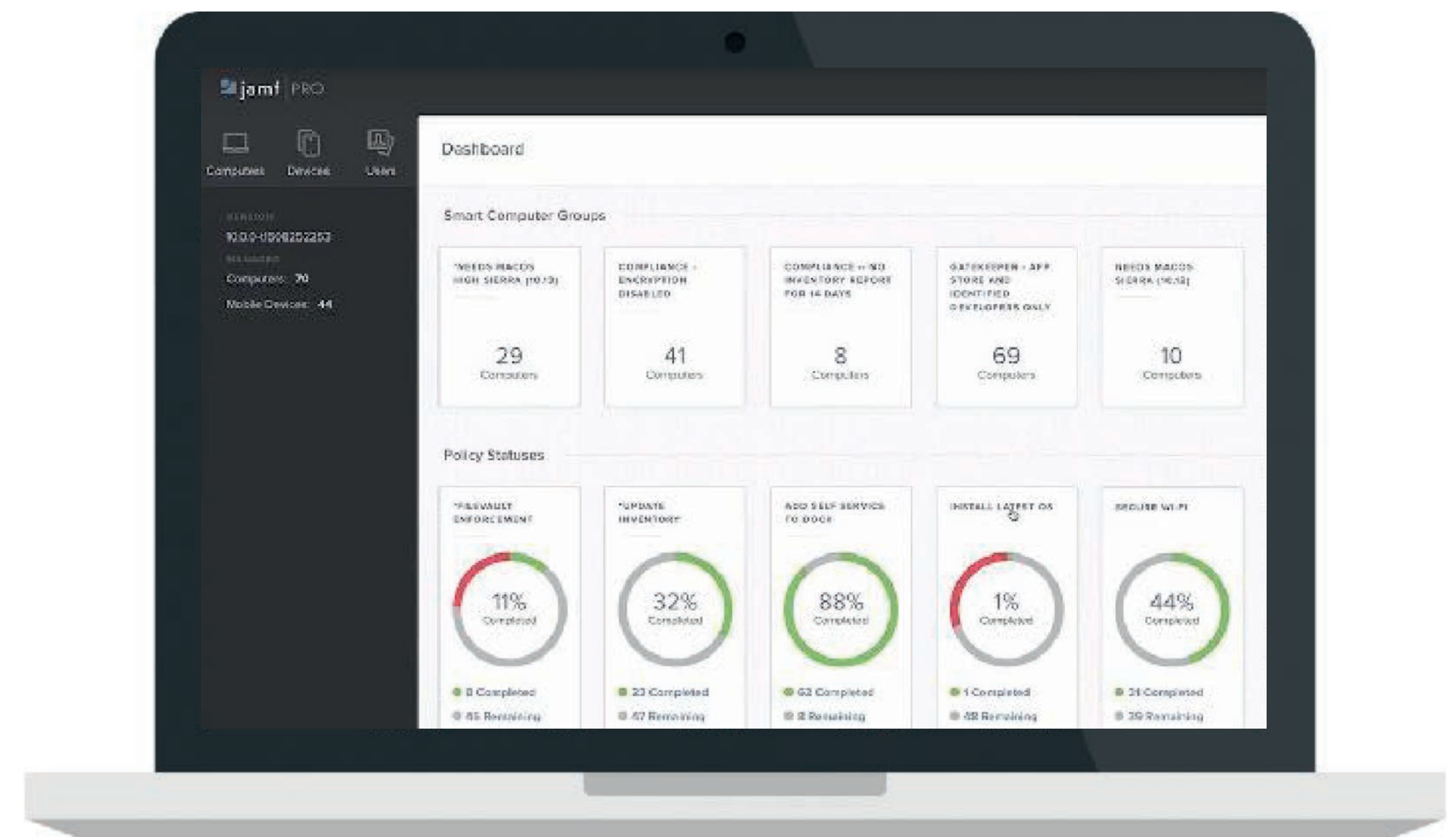
- JAMF Pro is an Apple MDM Service (Mobile Device Management)
- Manage devices & their deployment
- Manage apps & software
- Manage settings, configuration profiles and more
- Manage device inventory
- Manage security & compliance



Unique Selling Points/Features

iC[®]NNECT

- Exclusively for iOS, macOS & TvOS Management
- Manages more Apple Devices than any other MDM
- IBM, SAP, Apple, Microsoft, Walmart among the customer-base
- 17 of the top 25 Fortune 500 companies use JAMF Pro
- Partnership with Microsoft for Azure AD Enterprise Integration
- Considered the de facto standard for Apple Device Management
- Cloud-hosted or on-premise service



Example: Mercedes Benz

iC[®]NNECT



Mercedes-Benz

- 27 iPads managed for Repair/Service Fleet in Ireland
- iPads are located across 13 different Counties
- Utilise an app (Assetminder) for fleet management/maintenance
- Assetminder is updated across the fleet wirelessly
- Restrictions/Settings are pushed automatically to the devices
- Out of the box deployment (no pre-configuration required)
- Devices can be shipped directly & used almost instantly

Example: St. John's Central College

iC[®]NNECT



- 160 Macs & 40 iPads managed using JAMF Pro
- Macs use Software such as Adobe CC, Final Cut, Logic Pro X
- Used to spend weeks manually managing devices
- Now out of the box, configured & software pushed automatically
- Automatically integrates with their AD Server for Student Logins
- Use DEP, VPP & Apple School Manager with JAMF Pro
- Use Imaging in JAMF Pro to quickly restore a device



- Manage 88 Macs & 54 iPads/iPhones
- Located across Dubai & UAE
- Used for Inventory, Security & Compliance
- Some devices placed in-store for display purposes
- Corporate iPhones also managed under JAMF Pro



- An Employee choice program between Mac/Win devices
- Currently manage 150,000+ Mac devices (JAMF Pro of course)
- The biggest Mac deployment on earth (Bigger than Apple)
- 50% less support calls than PC users for Mac devices
- Savings over 4yrs: \$273-\$543 per Mac (compared to PC)
- 73% of IBM employees want a Mac as their device of choice